



INTERSECTIONALITY

**Ageing &
Wellness**



Mitini
NEPAL
मितिनी नेपाल

Learning from the project



“Elders sharing stories during leadership training and story telling session”

- **Situation of elders**
 - Housing (living in barren land or open land not registered yet in a personal name)
 - Diversity (Cast, Class, disability, religion)
 - legal identity (Citizenship, birth registration of adopted child)
 - Religious issue (Tharu community, Muslim community)
 - Discrimination (Wages, family, society)
 - Elders are unaware about their own rights /stories and laws

- **Success story**
 - Acceptance (Relationship, identity)

Landscape Analysis

SUMMARY OVERVIEW



56%

lived in urban areas



44%

lived in rural areas



50%

were ages 50 to 54

41%

were ages 55 to 69

9%

were ages 70 to 75



68%

self-identified as transwomen/
third gender



9%

self-identified as transmen/
third gender



83%

were assigned male at birth



16%

were assigned female at birth



1%

were intersex



77%

were from indigenous communities, specifically, Janajati and Madhesi castes



8%

self-identified as lesbians



9%

self-identified as bisexuals



88%

had Nepali citizenship

8%

did not have Nepali citizenship

4%

did not respond

22%

were from Brahmin, Chhetri, Thakhuri, and Dalit castes, and from the Nepali Muslim community

1%

did not identify their caste or ethnicity



6%

self-identified as gay



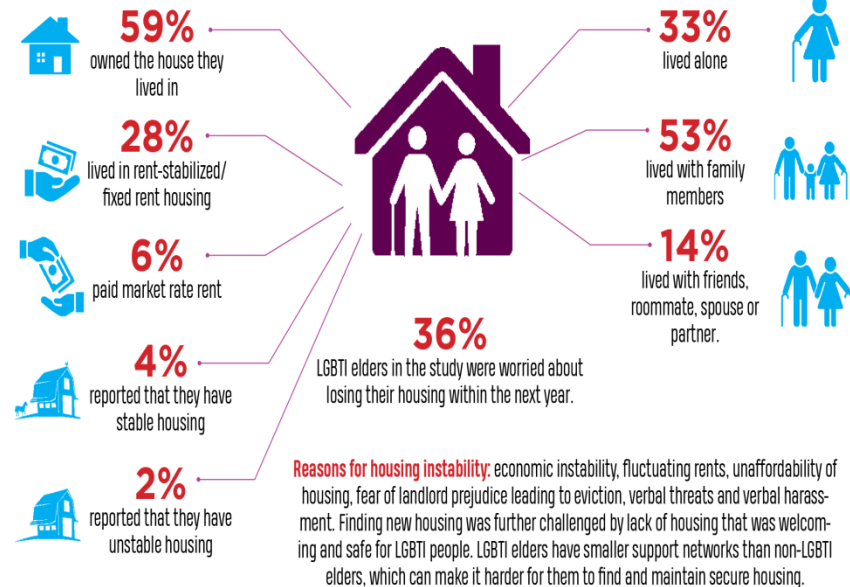
Impacts of Age Discrimination on
OLDER LGBTI PERSONS
in Nepal



Six provinces of Nepal and 100 respondents

Landscape Analysis

LIVING ARRANGEMENTS & HOUSING FOR LGBTI ELDERS



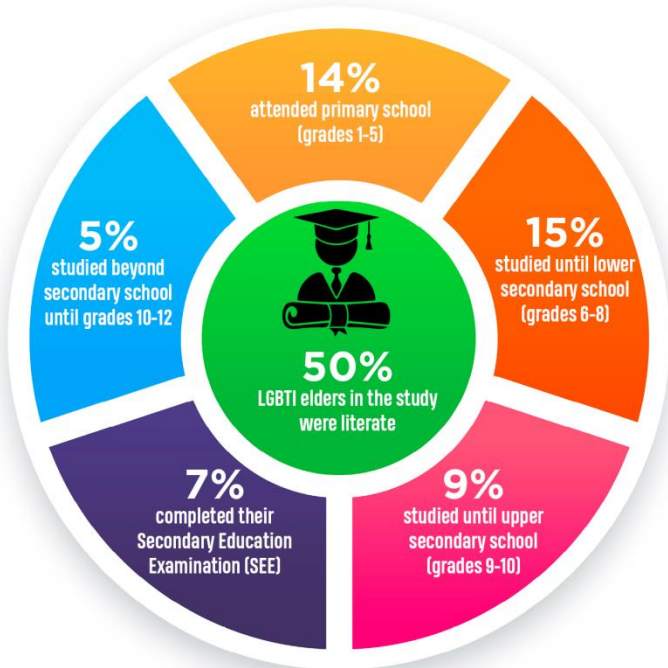
RELATIONSHIP STATUS OF LGBTI ELDERS

In Nepal, marriage is legally and socially recognized as a union between two individuals of opposite sexes or genders (heterosexual marriage). Findings below show diverse relationship status.



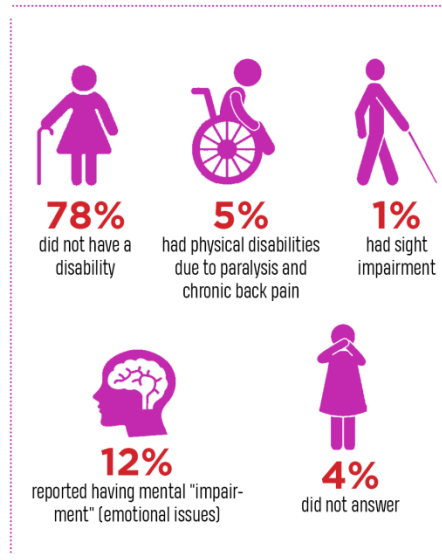
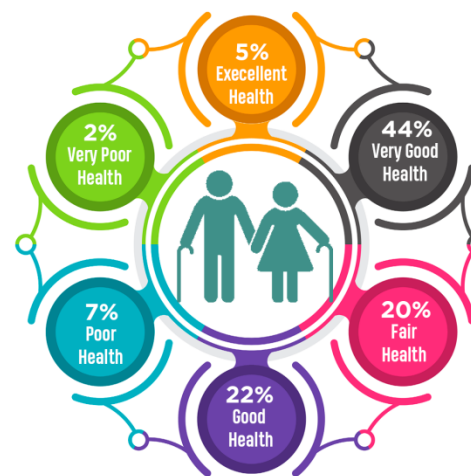
Mitini
NEPAL
मितिनी नेपाल

Landscape Analysis



WELL-BEING & HEALTH OF LGBTI ELDERS

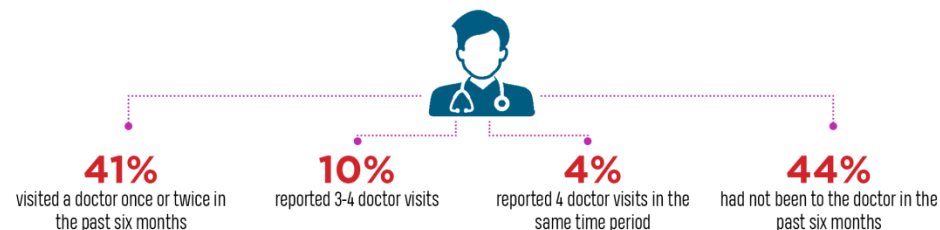
Survey and interview respondents were asked to select all options that applied to their well-being and health.



POOR PHYSICAL HEALTH was attributed to diabetes, hypertension, lack of nutrition, lack of exercise, lack of sleep, falls, reduced immunity, and lack of access to health services.



Mitini
NEPAL
मितिनी नेपाल



Challenges

- **Discrimination/ Violence (family, society, hate crime, speech)**
- **Legal documents (Citizenship Issue, child birth registration, marriage equality)**
- **Inaccessibility of Service (education, health and Employment, housing, shelters, hotline services)**
- **Financial Instability due to unwanted retirement from workplace due to growing age.**
- **There is no specific insurance facility for the elderly.**
- **There isn't any specific laws for LGBTI elders**

Successful efforts

- **Able to build the capacity (story telling and public speaking) of LGBTI elders**
- **Elders get opportunity to share their experiences in International platform (i.e CSW and 16th IFA conference etc)**
- **Make citizenship of 75 elders (Chotkun Chaudhary)**
- **Data collection and story collection**
- **Relationship and networking with LGBTI elders and ageing org and federation**
- **Create IGFF group**



“Kajol Chaudhary from Sudurpaschim Province sharing about her citizenship issue during the meeting with elders”



“A group photo of LGBT elders from Province 1 and Province 2 captured during the meeting”

Contact Details

Presenter: Sarita K.C, Executive Director, Mitini Nepal

E-mail:

mitini.nepal@gmail.com

Website:

www.mitininepal.org.np

Twitter:

<https://twitter.com/MitiniNepal>

Facebook:

www.facebook.com/Mitininepal

Thank You